

Installation Accessories

Handles



NPT	Poly Handle	Metal Handle
3/4"	9PH34	9H34
1"	9PH1	9H1
1 1/4"	9PH114	9H114
1 1/2"	9PH112	9H112
2"	9PH2	9H2

Cable Range	Santoprene™ Handle	Poly Handle w/Clamp & Bushing
.70 - 1.00	65-9A013-D25	-
1.00 - 1.375	65-9A013-D35	-
1.250 - 1.375	-	9PM622
1.375 - 1.750	65-9A013-D45	-
1.438 - 1.562	-	9PM625
1.562 - 1.688	-	9PM627
1.688 - 1.812	-	9PM629

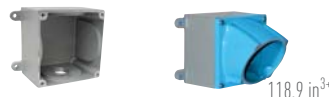
Notes: • For available cord grips, see pgs 169-170.

Angles



Metal 30° Angle	Metal 70° Angle	Metal Straight Adapter
MA10	89-9A027	MS10

Junction Boxes



NPT	Metal Box	Metal Box Metal Angle 30°
1 1/4"	MB10114	39-9A053-080-114
1 1/2"	MB10112	39-9A053-080-112
2"	MB102	39-9A053-080-2
2 1/2"	MB10212	39-9A053-080-212

NPT Guidelines

Cable Range	NPT
.312 - .625	1/2"
.438 - .812	3/4"
.660 - 1.000	1"
.875 - 1.375	1 1/4"
.890 - 1.812	1 1/2"
1.190 - 2.438	2"
2.062 - 2.438	2 1/2"

NPT sizes are determined by the cable diameter and third party cord grip.

Miscellaneous Accessories



For Male Devices Only

Protective Neoprene Cap	Cord Grip with Mesh	Receptacle ⁺ Lockout Pin
DN63R	see pgs 169-170	LP-843

⁺ Requires Padlockable Pawl option (-843) on receptacle.

Order Example

A typical order should include an inlet part number, a receptacle part number **AND** the matching handles, angles or other required accessories.



Male Inlet with Handle (Plug)
17-68200 + 65-9A013-D25



Female Receptacle with Angle Adapter
17-64200 + MA10